

The Rotary Club of Hanalei Bay, chartered in 1994 meets Thursdays at noon at the St. Regis Hotel in Princeville



The Newsletter of the Rotary Club of Hanalei Bay, January 5, 2012 • Visit us at our website, www.hanaleirotary.org

Board of Directors and Officers

President, Bob Capwell
Past President, George Corrigan
President Elect, Tony Motta
Sgt. at Arms, Chick Lanphier
Secretary, Susan Elliott-Hubbard
Treasurer, Bob Horn

Directors

International Service, Sally Motta
Vocational Service, Marjorie Bennett
New Generations, Teresa Lambden Foundation, John Oszust
Club Service, Kawika Dela Sierra
Community Service, Branch Lotspeich
Public Relations, Robin Thompson
Bulletin Editor, Michael Somers

District 5000 Governor, Laurie Yoshida

Let's Make up!

<http://www.rotaryclubone.org>

Kalepa Sunrise, Tuesdays 7:30 at 22 North West Kauai, Tuesdays 5:30 pm at the Waimea Plantation Cottages

Poipu Beach, Wednesday, at the Casablanca Restaurant - Fellowship and breakfast buffet starts at 7:10 am, and meeting starts at 7:30.

Kapaa, Noon on Wednesdays, Jailhouse Pub and Grill at the Wailua Golf Course.

Kauai, at JJ's Broiler in the Anchor Cove Shopping Center in Nawiliwili at noon on Fridays.



Dr. Gilliss Dyer explains The Texas Petawatt Laser



Dr. Gillis Dyer, the son of our own Mike and Char Dyer, did the best he could to help us understand the Texas Petawatt Laser which is the most powerful laser in the world. LASER is an acronym derived from Light, Amplification by, Stimulated, Emission of Radiation. Lasers have been in use for over 50 years. Gilliss told us that in a laser, light is amplified as it passes through a special medium that has been energized. The Texas Laser creates tremendous energy as a petawatt is one quadrillion watts, many times more power than is delivered by all of the power plants in the United States. A state

of the art petawatt laser has 2,000 times the power output of all US plants. By comparison, a Laser pointer has about 1/1000th of a watt. The research conducted by the laser includes accelerating protons for advanced cancer therapy, probing the physics of the universe in the laboratory, sparking controlled nuclear fission and probing the structure of matter as it undergoes changes. During the question and answer session, John Oszust thanked Gillis for making everything so clear!!! He was introduced by proud father Mike who mentioned that Gillis was delivered into this world by Dr. Jeff Goodman.





Ya shoulda seen the other guy!



President Bob exchanges banners with Cindy Helmkamp from the St. Louis Club



Quilt Raffle tickets are going fast said John Oszust.



Tony Motta and Ric Cox selling Quilt tickets.



Marjorie Giffords Son John Pickering and his wife Anneke visiting from Michigan



Kopa gives the Blessing.



A Visiting Rotarian tells us that the Paradise Post may be coming to Kauai



Sgt at Arms Chick had the whole room on their feet and singing.



Two happy songbirds



Upcoming Events

Road Cleanup this Saturday January 7th.
Meet at 8 am at Foodland.

Quilt Raffle ticket Sales on Saturday January 7th
and Sunday January 8th. If you didn't get a change
to sign up, please just show up and lend a hand.

Saturday, January 14th we will be selling "Save the Pier"
shirts at the Pier. The sign up sheet will be passed at
next weeks meeting. We are a long way from realizing
our goal and need everyones help with this project.

Saturday, January 28th is our Weinberg Friends Workday.
We will be installing Rescue Tubes on Hanalei Bay and
doing some clean up work. We need at least 25 adult
members and spouses/friends to earn the \$10,000 award.
This year the funds will be given to the Hawaii Food
Bank to benefit the Food Pantries on the North Shore.

Birthdays in January

Jonathan McRoberts Jan. 25

Anniversaries in January

Jim O'Connor Jan. 22

Birthdays in February

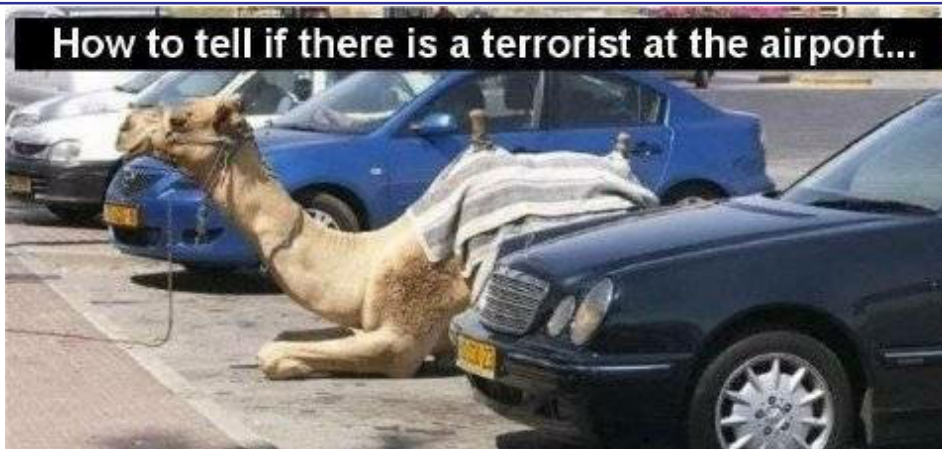
Branch Lotspeich Feb. 5
Robin Thompson Feb. 10
Bob Horn Feb. 10

Anniversaries in February

Lou Dubuque Feb. 11
Tsajon Von Lixfeld Feb. 14
Bill Savage (O) Feb 18



Visitor Anneke Pickering from Michigan won the Queen of Hearts raffle but unfortunately drew the Seven of Hearts. The pot continues to grow. Better luck next time!!



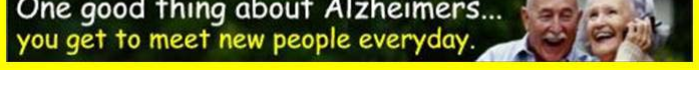
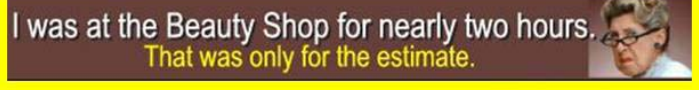
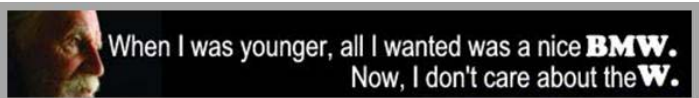
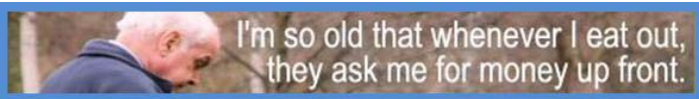
How to tell if there is a terrorist at the airport...

Savage Pearls, Inc. Robin Savage-Thompson
 Ching Young Village, Hanalei, Kauai Owner

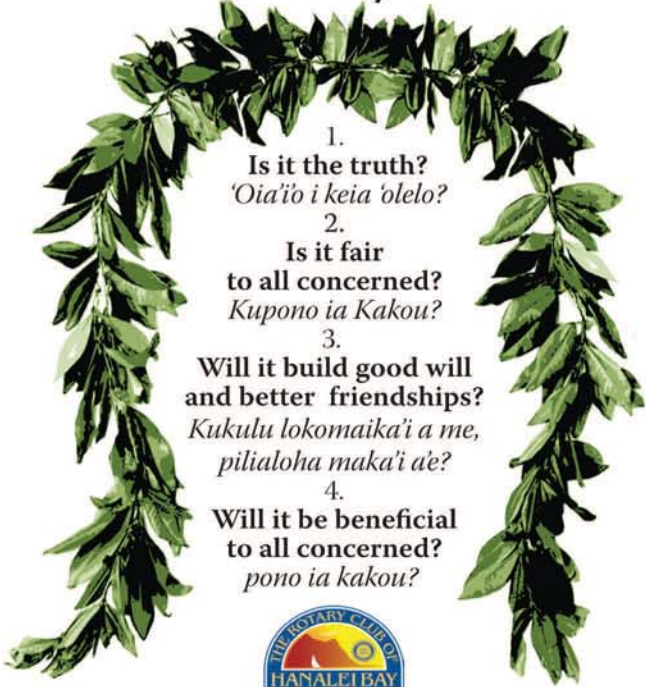


savagepearls@yahoo.com
 www.savagepearls.com
 Corporate Office,
 P.O. Box 1351, Hanalei, HI 96714
 Voice: 808-826-0317 / Fax 808-826-7978

Senior Citizens Bumper Stickers



The 4 way test



1. Is it the truth?
'Oia'io i keia 'olelo?
2. Is it fair to all concerned?
Kupono ia Kakou?
3. Will it build good will and better friendships?
Kukulu lokomaika'i a me, pili'aloa maka'i a'e?
4. Will it be beneficial to all concerned?
pono ia kakou?




Deanna Schafer
 WEDDING CONSULTANT

TEL 808 827-8123 FAX 808 826-7931
 PO Box 1634 Hanalei HI 96714

EMAIL: deanna@idoweddingskauai.com
 www.idoweddingskauai.com

